

Measuring for Windows & Doors

If you have aluminium windows

1. All measurements should be taken from *inside* the reveal/jamb liner (unless the reveal is rotted and needs to be replaced).
2. Take three measurements for width and we will use the shortest.
3. Take three measurements for height and we will use the shortest.
4. If the reveal is rotted and needs to be replaced, we need the complete rough opening (RO)/box size for a full frame replacement.



If you have timber windows (non-sash style)

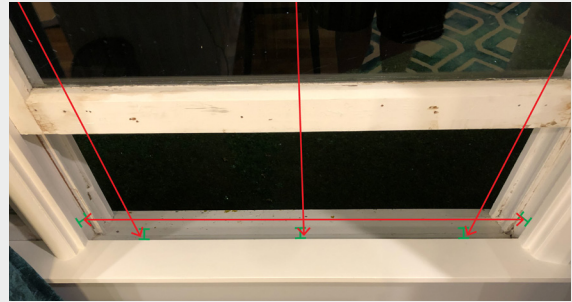
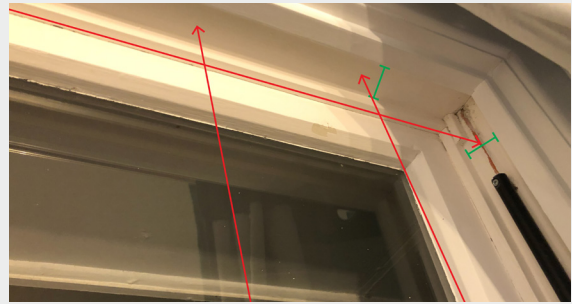
1. All measurements should be taken from *inside* the reveal/jamb liner (unless the reveal is rotted and needs to be replaced).
2. Take three measurements for width and we will use the shortest.
3. Take three measurements for height and we will use the shortest.
4. If the reveal is rotted and needs to be replaced, we need the complete rough opening (RO)/box size for a full frame replacement.



Note: No allowances are required, as our quoting software automatically allows for this.

If you have sash style timber windows

1. All measurements should be taken from *inside the track* where the operating sash and cord and pulley hardware is located (unless the frame is rotted and needs to be replaced).
2. At the bottom, measure from the highest part of the sloping sill.
3. Take three measurements for width and we will use the shortest.
4. Take three measurements for height and we will use the shortest.
5. If the frame is rotted and needs to be replaced, we need the complete rough opening (RO)/box size for a full frame replacement.



All doors (swinging entrance doors, ranch sliders, French doors, etc.)

1. Doors will always be a full frame replacement, so regardless of the material of the existing door, or if there is any rot, we need the complete rough opening (RO)/box size.
2. Take three measurements for width and we will use the shortest.
3. Take three measurements for height and we will use the shortest.
4. We do not replace door panel/leaves only. It will always be a completely new frame, sill, jamb, etc.



Note: No allowances are required, as our quoting software automatically allows for this.